

Measurement ranges others available upon request	250/500 Pa 1/2.5/5/10 kPa freely scalable from 10...100 % within a measurement range
Measurement accuracy <sup>1)</sup>	± 0.2 % FS or ± 0.5 % FS
Temperature coefficient span	0.03 % FS/K (10...50 °C)
Temperature coefficient zero point	± 0 % (cyclical zero-point correction)
Overload capacity	100 kPa for measurement ranges ≥ 2.5 kPa 200 x for measurement ranges < 2.5 kPa
Medium	natural gas
Max. system pressure	100 kPa for all measurement ranges
Step response time (T63) (Time constant)	25 ms...60 s (adjustable)
Rated temperature range	10...50 °C
Storage temperature	-10...70 °C
Power consumption	approx. 6 VA
Weight	approx. 750 g
Cable glands	2 x M 16
Protection class	IP 65
Certificates	CE/UKCA, EN1127-1:2007

<sup>1)</sup> Measurement accuracy for the reference 0.3 Pa, for measuring ranges ≤ ± 1.5 kPa

Output <sup>2)</sup> (linear/root-extracted)	A	Tubing connections	F
0...10 V ( $R_L \geq 2 \text{ k}\Omega$ )	1	standard for tubing ID 5...8 mm	0
0...20 mA ( $R_L \leq 500 \Omega$ )	0	cutting ring coupling 6 mm	S6
4...20 mA ( $R_L \leq 500 \Omega$ )	4	cutting ring coupling 8 mm	S8
± 5 V ( $R_L \geq 2 \text{ k}\Omega$ )	5		

<sup>2)</sup> output signals can be configured freely

Power supply	B	Calibration certificate	G
24 VDC ± 10 %	24 DC	none	0
		Factory calibration	I
		Calibration according to DKD-R 6-1	D

Measurement range	C
Measurement range e.g. 0...250 Pa, 0...100 mmHg (etc.)	

Measurement accuracy	D
± 0.2 % FS <sup>3)</sup>	2
± 0.5 % FS	S

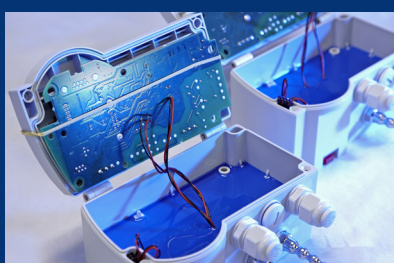
<sup>3)</sup> for measurement ranges ≤ 50 kPa

Display + keyboard	E
none	0
multi-coloured LCD and keyboard	LC



Order code	A	B	C	D	E	F	G
P29							

As long as the customer observes the specified flushing process, special electronic encapsulation safely separates any ignition sources from flammable gas.



## P 29

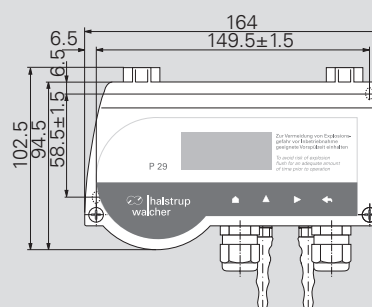


Picture: Version with display

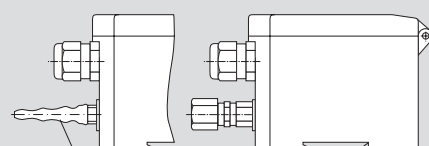
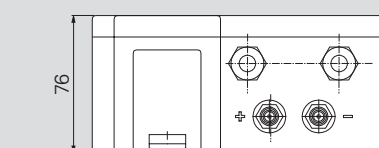
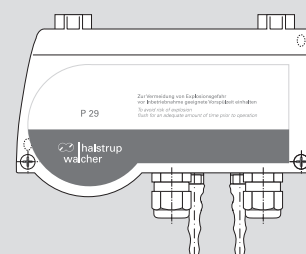
### Features

- TÜV-tested differential pressure transmitter for natural gas
- Design changes and technical modifications keep ignition source and gas mixture safely separated (not suitable for Ex-applications)
- Scalable measurement range and display
- For pressure and volume flow measurement
- Zero-point correction prevents zero-point drift
- Built-in valve provides a high level of overload protection
- Also suitable for top-hat rail mounting
- Multilingual menu (English/French/German/Italian)
- Extensive configuration options via: internal RS232 interfaces by means of free parameterization software or optional display and operating keys

### P29 with display



### P29 without display





Cutting ring connector (optional)

Laboratory nozzle in accordance with DIN 12898

All dimensions in mm

# MEASUREMENT OF DIFFERENTIAL PRESSURE

Measurement of differential pressure is useful in a broad range of applications. It is used in ventilation and air-conditioning technology but also in many areas of air handling process technology. halstrup-walcher offers a wide range of products for stationary measurement of differential pressure:

Product	P26	P34	P29	PU / PI / PIZ	PS27	PS 17
						
Application	High precision, freely scalable pressure transmitter for critical applications	Measuring transmitter with very small dimensions – ideal for the control cabinet	High precision, freely scalable pressure transmitter for natural gas	For standard applications. PIZ: in two wire technology	A basic sensor for simple applications	Differential pressure transmitter for basic applications
Housing installation	Mounted on a wall/top-hat rail					
Max. measurement range	± 100 kPa		0 .. 10 kPa	± 100 kPa	± 10 kPa	
Min. measurement range	± 10 Pa		0 .. 250 Pa	± 50 Pa		
Measurement accuracy <sup>1)</sup>	± 0.2 % FS <sup>2)</sup> (optional) ± 0.5 % FS (standard)			± 0.2 % FS <sup>3)</sup> ± 0.5 % FS ± 1 % FS	± 3 % for measuring ranges < 100 Pa or ± 2 % for measuring ranges ≥ 100 Pa	± 1 % of the set final value plus ± 0,5 Pa for measuring ranges ≤ 250 Pa plus ± 1 Pa
Square-root (volume flow)	✓	✓ <sup>2)</sup>	✓	-	-	✓
Display	optional	-	optional	optional	optional	optional

<sup>1)</sup> Measurement accuracy for the reference 0.3 Pa, for measuring ranges ≤ ±1.5 kPa

<sup>2)</sup> for measurement ranges ≤ 50 kPa

<sup>3)</sup> for measurement ranges ≥ 250 Pa and ≤ 50 kPa

## ACCESSORIES

### Connecting components

Silicone tubing ID 5 mm, OD 9 mm, red (please state length required)	9601.0160
Silicone tubing ID 5 mm, OD 9 mm, blue (please state length required)	9601.0161
Norprene tubing ID 4.8 mm, OD 8 mm, black (please state length required)	9061.0132
Y-piece for tubing NW 5mm	9601.0171

### User software

You can set the parameters for our instruments or monitor and record measurements using a PC via a USB or RS232 interface. These features are supported by our free user software. This also allows you to transfer your settings to other devices by saving and reusing them.

Our user software is compatible with the following pressure transmitters: P26, P34 and P29.

You can download the file here:

[www.halstrup-walcher.de/en/software](http://www.halstrup-walcher.de/en/software)