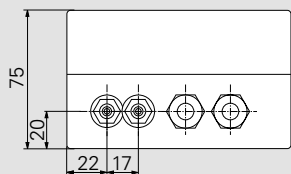
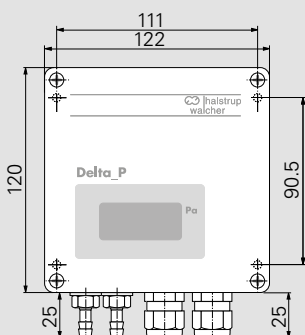




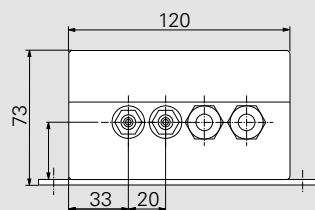
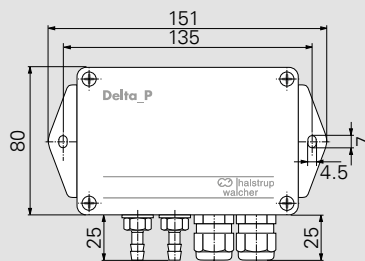
Features

- Differential pressure transmitter with linear curve for air-conditioning applications
- Also available as a two-wire system ("PIZ" model)
- Also for \pm measurement ranges and asymmetric measurement ranges
- With optional LCD

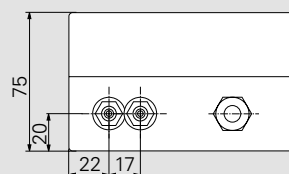
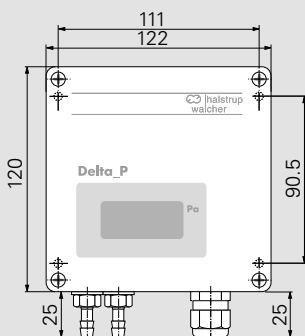
PU/PI with display



PU/PI without display



PIZ with display



Measurement ranges (also \pm measurement ranges) others available upon request	50/100/250/500 Pa 1/2.5/5/10/20/50/100 kPa
Margin of error (0.3 Pa margin of error for the reference)	$\pm 0.2\% \text{ FS}^1$ only for measurement ranges $\geq 250 \text{ Pa}$ and $\leq 50 \text{ kPa}$ $\pm 0.5\% \text{ FS}^1$, $\pm 1\% \text{ FS}$
Temperature coefficient span	0.04 %FS /K (10..60 °C)
Temperature coefficient zero point	0.04 %FS /K (10..60 °C)
Zero point stability	0.5 % FS/year
Overload capacity	10 x for measurement ranges $\leq 20 \text{ kPa}$ 2 x for measurement ranges $> 20 \text{ kPa}$
Medium	air, all non-aggressive gases
Max. system pressure	10 kPa for measurement ranges $\leq 10 \text{ kPa}$ max. nominal pressure of the sensor for measurement ranges above 10 kPa
Sensor response time	20 ms
Operating temperature	10..60 °C
Storage temperature	-10..70 °C
Power consumption	PU/PI: approx. 3 VA PIZ: max. 0.6 VA
Weight	approx. 0.8 kg
Cable glands others available upon request	PU/PI: 2xPG 7 PIZ: 1xPG 7
Pressure ports	for tubing NW 6 mm
Protection class	IP65
Certificates	CE

Model	Output	A
PU	0..10 V ($R_L \geq 2 \text{ k}\Omega$)	U
PI	0..20 mA ($R_L \leq 500 \Omega$)	I0
PI	4..20 mA ($R_L \leq 500 \Omega$)	I4
PIZ	4..20 mA two-wire ($R_L \leq 50 [U_B (V) - 10 (V)] \Omega$)	IZ

Measurement range	B
e.g. 0..100 Pa, 0..60 mbar, $\pm 110 \text{ mmHg}$ (etc.)	

Margin of error	C
$\pm 0.2\% \text{ FS}^1$ only for measurement ranges $\geq 250 \text{ Pa}$ and $\leq 50 \text{ kPa}$	02
$\pm 0.5\% \text{ FS}^1$	05
$\pm 1\% \text{ FS}$	1

¹⁾ not for PIZ with \pm measurement ranges

Supply voltage	D
24 VDC, +20%/-15% ²⁾	24D
24 VAC, +6%/-15% (50/60 Hz) ²⁾	24A
115 VAC, +6%/-15% (50/60 Hz) ²⁾	115
230 VAC, +6%/-15% (50/60 Hz) ²⁾	230
10..32 VDC (two-wire system)	PIZ

²⁾ not for PIZ

Time constant	E
none	0
1 s	1
2 s	2
5 s	5

LCD	F
none	0
3 1/2 digit (see foto)	3
4 1/2 digit (only for PU/PI)	4

Order code	A	B	C	D	E	F
P	-	-	-	-	-	-