



Applications include:

Landslide Prevention
Dam Wall Monitoring

Mining Exploration
Tunnel Excavation

Concrete Curing

***FREE Software & Technical Support**

Advanced design and technology plus 25 years of geotechnical expertise have produced the *dataTaker* DT80G GeoLogger – A versatile, powerful – yet low power & cost effective data logger.

- A cost effective data logger expandable to 100 channels
- Supporting vibrating wire and other Geotechnical sensors
- Compatible with all major brands – Slope Indicator, RST Instruments, Geokon, Soil Instruments, Roctest, AGI – Applied Geomechanics Inc.
- Standalone or part of a network with powerful inbuilt communication options, allows access to data how or where you want
- Capable of testing the integrity of vibrating wire sensors
- Includes USB memory stick support
- Rugged design and construction provides reliable operation in the extremes of the geotechnical environment and applications.
- 5 analog channels capable of measuring up to 5 vibrating wire strain gauges with thermistors or 15 vibrating wire strain gauges without thermistors
- Designed and manufactured in Australia to the highest quality standards.

Getting the Data

View the data in real time or store up to 10 million data points. Data storage and retrieval can be achieved via USB memory stick, FTP, cell phone¹, Modbus for SCADA, Ethernet or Web. The web server allows browser access to data and files, FTP provides data to your office over the internet or mobile phone¹ network, without the need for polling or specific host software.

- » Vibrating Wire Support
- » Low Cost Per Channel
- » Carlson, Electro Level & LVDT support
- » Expandable to 300 analog inputs
- » Strain Gauge Support
- » Web & FTP client / server

Warranty: All dataTaker Data Loggers are covered by a 3 year warranty on workmanship and parts. For further information on the dataTaker range, or for useful downloads, visit the dataTaker web site at www.datataker.com or contact your nearest dataTaker office or distributor.

Quality Statement: dataTaker operates a Quality Management System complying with ISO9001:2008. It is dataTaker's policy to supply customers with products which are fit for their intended purpose, safe in use, perform reliably to published specification and are backed by a fast and efficient customer support service.

Trademarks: dataTaker is a registered trademark.

Specifications: dataTaker reserves the right to change product specifications at any time without notice. **Designed and Manufactured in Australia.**

¹Our ability to provide free software and support is dependent on applicable export control laws (including those of the United States) and the export policy from time to time of Thermo Fisher Scientific Inc.

¹Using external GSM/3G modem (sold separately)

- » Built-in software - no application to install
- » Runs directly from your web browser
- » Accessible by Ethernet or USB¹ connection
- » Intuitive graphical interface
- » Easy-to-use configuration editor
- » Access live and historical data
- » View data as charts, mimics and tables

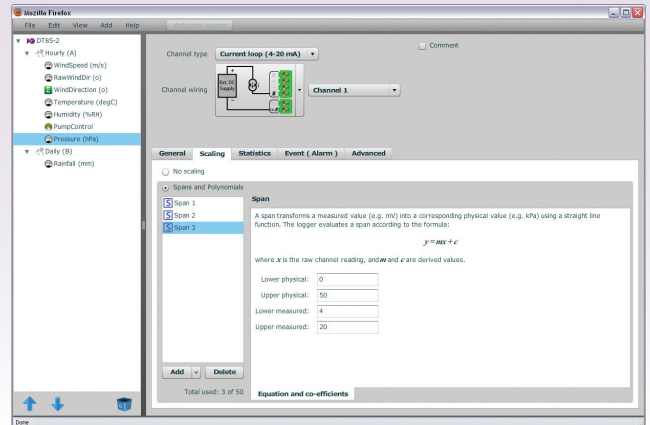
What is dEX?

dEX is an intuitive graphical interface that allows you to configure your data logger, view real-time data in mimics, trend charts or tables and retrieve your historical data for analysis.

dEX runs directly from your web browser and can be accessed either locally or remotely, anywhere that a TCP/IP connection is available including worldwide over the Internet. You can use any of the logger's built-in communications ports to view dEX including Ethernet, USB¹ and RS-232.

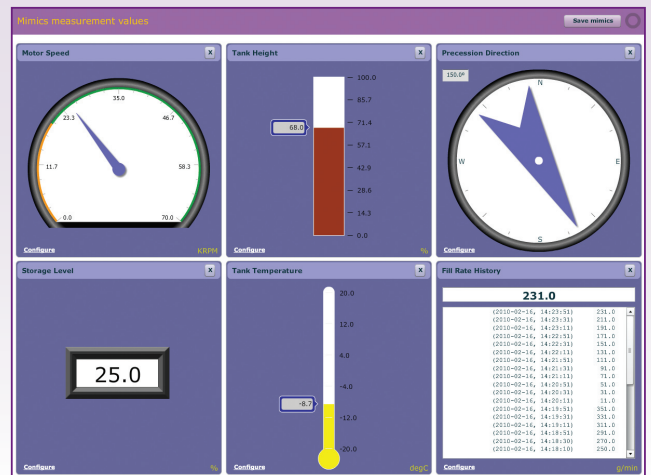
Easy configuration

The dEX configuration editor allows you to view, edit and save logger configurations in an easy-to-use Windows Explorer style user interface.



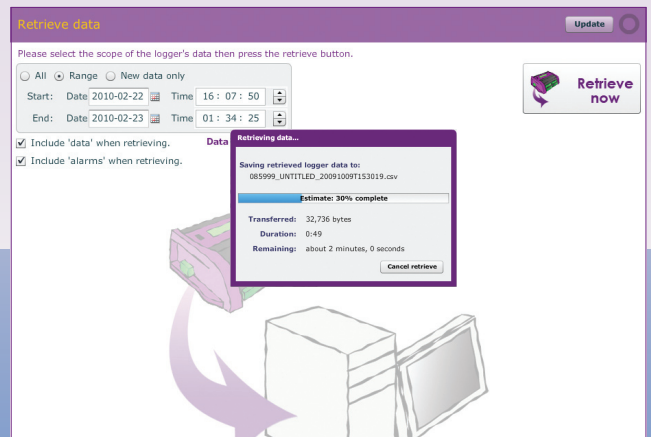
Real-time monitoring

dEX displays real-time sensor measurements, calculations and diagnostic information using mimics, tables and trend charts.



Data retrieval

dEX allows you to retrieve your data at the click of a mouse button. Just select either All, Range or New Data Only.



Browser-based solution

dEX comes pre-installed on every logger in the DT80 range². The software loads in your web browser so there is no need to install cumbersome applications on your computer. Being browser-based, dEX is cross-platform and will work on all major operating systems including Windows, Mac and Linux. To simplify it even further, dEX starts automatically in your default web browser when you connect to your logger using a USB cable¹.

Data that is compatible with your applications

Logged data is ready to import into common spreadsheet and data processing applications such as Excel for further analysis and reporting. Data can be saved to your computer in comma separated (.CSV) format or our proprietary binary (.DBD) format.

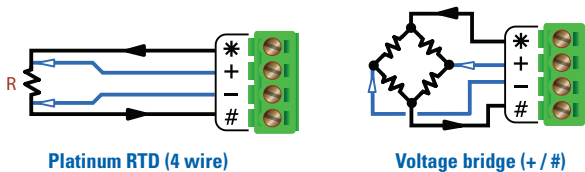
Command window

The command window provides a terminal interface which allows the built-in command language of the logger to be used. Macro buttons allow common commands to be sent on a button press.

Configuration editor

The configuration editor allows you to view, edit and save logger configurations in an easy-to-use Windows Explorer style user interface. Tree view of configuration allows definition of measurement schedules and measurements.

Wiring diagrams show available wiring configurations for each sensor type. Configuration can be stored and retrieved on either the logger or a local computer.



Channel list

Displays name, value, units, alarm state, time stamp and logging state for each measurement.

Run	Name	Value	Units	Alarm	Time stamp	Log
✓	1hr_Humidity	51	%RH		2010-02-02, 12:00:00	✓
✓	1hr_Mean Win	0	m/s		2010-02-02, 12:00:00	✓
✓	1hr_Mean Win	7			2010-02-02, 12:00:00	✓
✓	1hr_Pressure	1006	hPa		2010-02-02, 12:00:00	✓
✓	1hr_Temperature	23.6	Deg C		2010-02-02, 12:00:00	✓
✓	1min_Humidity	48	%RH		2010-02-02, 12:32:00	✓
✓	1min_Mean Win	0	m/s		2010-02-02, 12:32:00	✓

Customisation of the application

The menu options, mimics panels and mimics can be added or removed to suit novice or advanced users. The color and brand name images within dEX can be customised to match corporate requirements or for personal preference.

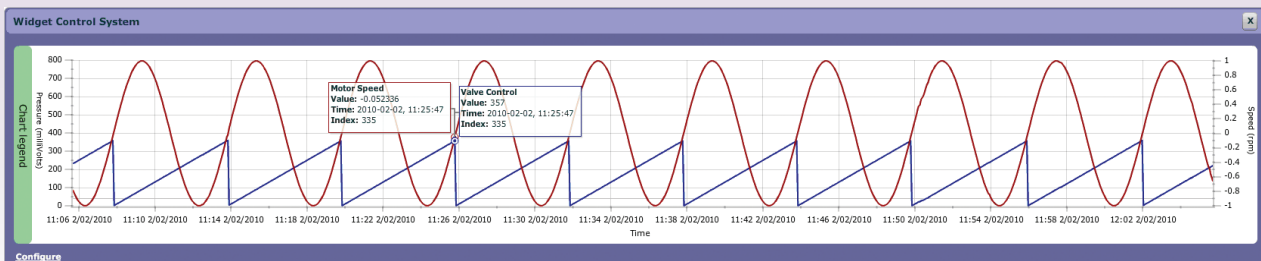
Mimics are organised into panels which can be modified to highlight custom alarm conditions or data grouping. Mimics include dials, bar graphs, thermometers etc. Real-time chart recorder mimic allows you to view trends and historical data over a custom time/date range. Up to 16 mimics can be displayed on up to 5 mimic pages (default is 1 page of 6 mimics).

Minimum system requirements

- Web Browser (tested with): Internet Explorer V7 and above, Firefox, Safari & Google Chrome
- TCP/IP connection
- Adobe flash player 10 or higher
- Screen resolution of 1024 x 768

Chart recorder mimic

Real-time trending for sensors, calculations or other data. Supports up-to-5 traces per chart and up-to-2 Y-axes. Backfills with historical data stored in logger.



1. USB port equipped models only.
 2. dEX operates on all DT80 range Series 2 & Series 3 models (DT80, DT81, DT82E, DT85, DT80G, DT85G). The latest firmware which includes dEX is available for download from the dataTaker website. DT80 range Series 1 models do not support dEX.

The difference is dEX!

