



**dataTaker**

## DT82EM Series 3 Data Logger

*Designed especially for environmental monitoring*



### Applications include:

Environmental Monitoring	Agricultural Research
Research & Development	Total Energy Monitoring
Weather Stations	Temperature Profiling
Thermistor Arrays	Aquaculture
Wind Power Generation	

**\*FREE Software & Technical Support**

### Designed For Remote Applications

The dataTaker DT82EM intelligent data logger is a low-powered logging platform with an integrated cellular modem, making it perfect for remote applications. The rugged design and wide operating temperature range of the DT82EM provides reliable operation in virtually any environment. The DT82EM's perfect balance of performance with low-power also allows you to use a smaller solar panel without compromising on functionality.

### Automatic Data Delivery

Forget travelling long distances to get your data. Utilise the DT82EM's automatic data delivery features to schedule your data to be automatically emailed to your inbox every day, week, month or other time interval. More sophisticated systems can make use of the automatic data delivery features to send logged data to an FTP server. Alarm conditions can also trigger data delivery in addition to sending alarm messages to multiple email addresses or mobile phones.

### Easy To Configure

The DT82EM is configured directly in your web browser using dataTaker's *dEX* graphical interface. *dEX* takes you through the configuration of your logger, showing you wiring diagrams and allowing you to decide – in as much or as little detail – how you want the system to work, suiting both novice or advanced users. Using the internal modem you can even re-configure your system remotely over the internet if required.

- » Ultra low-power design
- » Integrated cellular modem
- » Automatic data transfer to email or FTP
- » Support for up to 10 SDI-12 sensors
- » Up to 6 Analog ( $\pm 30V$ ) sensor inputs
- » Flexible digital channels & counters
- » Modbus for SCADA connection
- » Switchable 12V & 5V supplies for powering sensors

**Warranty:** All dataTaker Data Loggers are covered by a 3 year warranty on workmanship and parts. For further information on the dataTaker range, or for useful downloads, visit the dataTaker web site at [www.datataker.com](http://www.datataker.com) or contact your nearest dataTaker office or distributor.

**Quality Statement:** dataTaker operates a Quality Management System complying with ISO9001:2008. It is dataTaker's policy to supply customers with products which are fit for their intended purpose, safe in use, perform reliably to published specification and are backed by a fast and efficient customer support service.

**Trademarks:** dataTaker is a registered trademark.

**Specifications:** dataTaker reserves the right to change product specifications at any time without notice. **Designed and Manufactured in Australia.**

\*Our ability to provide free software and support is dependent on applicable export control laws (including those of the United States) and the export policy from time to time of Thermo Fisher Scientific Inc.

WWW.IAG.CO.AT



# dEX Logger Software

- » Built-in software - no application to install
- » Runs directly from your web browser
- » Accessible by Ethernet or integrated modem
- » Intuitive graphical interface
- » Easy-to-use configuration editor
- » Access live and historical data
- » View data as charts, mimics and tables

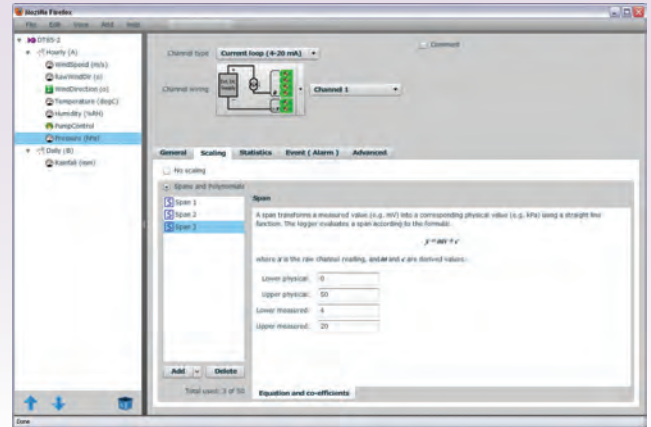
## What is dEX?

dEX is an intuitive graphical interface that allows you to configure your data logger, view real-time data in mimics, trend charts or tables and retrieve your historical data for analysis.

dEX runs directly from your web browser and can be accessed either locally or remotely, anywhere that a TCP/IP connection is available including worldwide over the Internet.

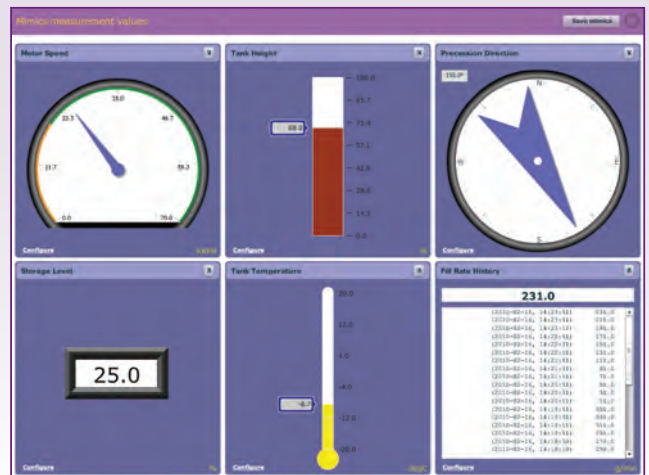
## Easy configuration

The dEX configuration editor allows you to view, edit and save logger configurations in an easy-to-use Windows Explorer style user interface.



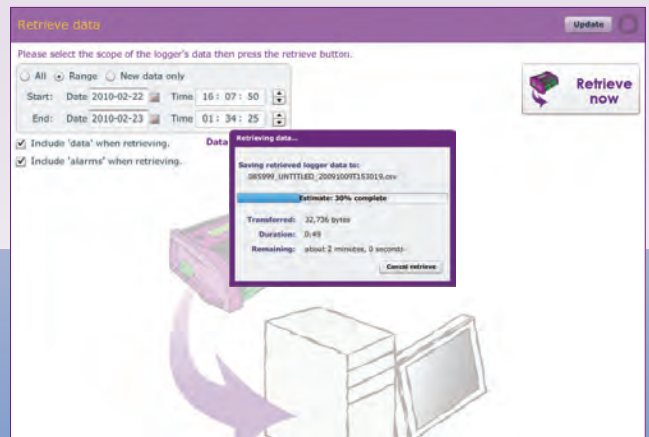
## Real-time monitoring

dEX displays real-time sensor measurements, calculations and diagnostic information using mimics, tables and trend charts.



## Data retrieval

dEX allows you to retrieve your data at the click of a mouse button. Just select either All, Range or New Data Only.





## Browser-based solution

dEX comes pre-installed on every logger in the DT80 range. The software loads in your web browser so there is no need to install cumbersome applications on your computer. Being browser-based, dEX is cross-platform and will work on all major operating systems including Windows, Mac and Linux.

## Data that is compatible with your applications

Logged data is ready to import into common spreadsheet and data processing applications such as Excel for further analysis and reporting. Data can be saved to your computer in comma separated (.CSV) format or our proprietary binary (.DBD) format.

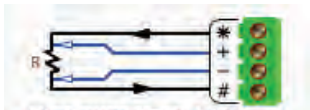
## Command window

The command window provides a terminal interface which allows the built-in command language of the logger to be used. Macro buttons allow common commands to be sent on a button press.

## Configuration editor

The configuration editor allows you to view, edit and save logger configurations in an easy-to-use Windows Explorer style user interface. Tree view of configuration allows definition of measurement schedules and measurements.

Wiring diagrams show available wiring configurations for each sensor type. Configuration can be stored and retrieved on either the logger or a local computer.



Platinum RTD (4 wire)



Voltage bridge (+ / #)

## Channel list

Displays name, value, units, alarm state, time stamp and logging state for each measurement.

Run	Name	Value	Units	Alarm	Time stamp	Log
✓	1hr_Humidity	51	%RH		2010-02-02, 12:00:00	✓
✓	1hr_Mean Win	0	m/s		2010-02-02, 12:00:00	✓
✓	1hr_Mean Win	7			2010-02-02, 12:00:00	✓
✓	1hr_Pressure	1006	hPa		2010-02-02, 12:00:00	✓
✓	1hr_Temperature	23.6	Deg C		2010-02-02, 12:00:00	✓
✓	1min_Humidit	48	%RH		2010-02-02, 12:32:00	✓

## Customisation of the application

The menu options, mimics panels and mimics can be added or removed to suit novice or advanced users. The color and brand name images within dEX can be customised to match corporate requirements or for personal preference.

Mimics are organised into panels which can be modified to highlight custom alarm conditions or data grouping. Mimics include dials, bar graphs, thermometers etc. Real-time chart recorder mimic allows you to view trends and historical data over a custom time/date range. Up to 16 mimics can be displayed on up to 5 mimic pages (default is 1 page of 6 mimics).

## Minimum system requirements

- Web Browser (tested with): Internet Explorer, Firefox, Safari & Google Chrome
- TCP/IP connection
- Adobe flash player 10 or higher
- Screen resolution of 1024 x 768

## Chart recorder mimic

Real-time trending for sensors, calculations or other data. Supports up-to 5 traces per chart and up-to 2 Y-axes. Backfills with historical data stored in logger.

